

Diagram References

1 Appearance

- ① Camera
- ② IR Supplement Light
- ③ Screen
- ④ Loudspeaker
- ⑤ Buttons
- ⑥ Microphone
- ⑦ Card Reading Area
- ⑧ Fingerprint Recognition Module
- ⑨ TAMPER

Note: The appearance of the device vary according to different model. Refers to the actual device.

2 Terminal

- LAN: Network Signal Input
- BTN1/BTN2: Exit Button Input
- 485A+/485A-: External RS-485 Card Reader
- 485B+/485B-: External Elevator Controller
- GND: Grounding
- COM1/COM2: Common Interface
- NC1/NC2: Door Lock Relay Output (Normally Close)
- NO1/NO2: Door Lock Relay Output (Normally Open)
- SEN1/SEN2: Door Contact Input
- DC 12 V: 12 VDC Power Input

Note:
 ● The reserved port is used for debugging only.
 ● Wiring description refers to the User Manual.

3 Installation

- Before you begin:
- Accessories that you need to prepare for installation: gang box.
 - Make sure the power supply meet the power requirements of the door station (12 VDC, 2 A).
 - Make sure all the related equipment is power-off during the installation.
 - Wire the cables before installation.

- #### ★ Accessory
- The dimension of the gang box is 364 mm (W) × 118 mm (H) × 40 mm (D).
 - The installation hole should be larger than the actual size. The suggested dimension of the installation hole is 364.3 mm (W) × 118.6 mm (H) × 40.2 mm (D).

★ Flush Mounting

- Cave an installation hole on the wall. Pull the cable out from the wall.

Note:
 The suggested dimension of the installation hole is 364.3 mm (W) × 118.6 mm (H) × 40.2 mm (D).
 The suggested length of the cables left outside is 250 mm.
- Install the gang box into the wall.
 - Remove the plastic sheet of the gang box with the tool.
 - Insert the gang box into the installation hole. Mark the gang box screw holes' position with a marker, and take out the gang box.
 - Drill 4 holes according to the marks on the wall, and insert the expansion sleeves into the screw holes.
 - Fix the gang box with 4 expansion bolts.
- Fix the gap between the gang box and wall with concrete. Remove the mounting ears with tool after concrete is dry. Connect the cables according to the Wiring Description in User Manual.
- Insert the door station into the gang box. Slide the door station down and fix it with 2 set screws. Apply Silicone sealant among the joints between the device and the wall (except the lower side) to keep the raindrop from entering.

4 Configuration

1 Activate Device

- You are required to activate the device first by setting a strong password for it before you can use the device.
- Power on the device to enter the activation page automatically.
 - Create a password and confirm it.
 - Press # to activate the door station.

- Note:
- Enter an 8 to 16 characters admin password.
 - When entering the password, taking the numeric key 2 as example, press the numeric key 2 once, the text field shows "2", and press it again in 1.5 s, the text field shows "a", and press it again in 1.5 s, the text field shows "b", and so on.
 - Hold 0 to enter special characters.
 - Press # to confirm the password.
 - Press * to delete the password during entering.

2 Call Resident

- The door station can work as main/sub door station, and outer door station, which correspond to different calling resident modes respectively.
- Call from Main/Sub Door Station
 Press number button to enter the calling page.
 Enter the room No. and press call button again to call.
- Call from Outer Door Station
 Press number button to enter the calling page.
 Enter 【Building No. + # + Unit No. + # + Room No.】 and press call button to call resident.

3 Call Center

- Press number button to enter the calling page.
 Press center button to call. Press * to cancel during calling management center.

4 Unlock Door

- The device support unlock the door by presenting card, entering password, and fingerprint. Here takes unlock by entering password and unlock by presenting card for example.
- Note: You should create the password and add the card to the device first.
- Unlock by Entering Password
- Common Password
- Press number button, enter 【# + room No. + password + #】 to unlock the door.
- Public Password
- Note: Create the public password via IVMS-4200 Client Software remotely first.
- Press number button, enter 【# + public password + #】 to unlock the door.
- Unlock by Presenting Card
- Present the card on the card reading area to unlock the door.

5 Appendix

1 Tips When Collecting/Comparing Face Picture

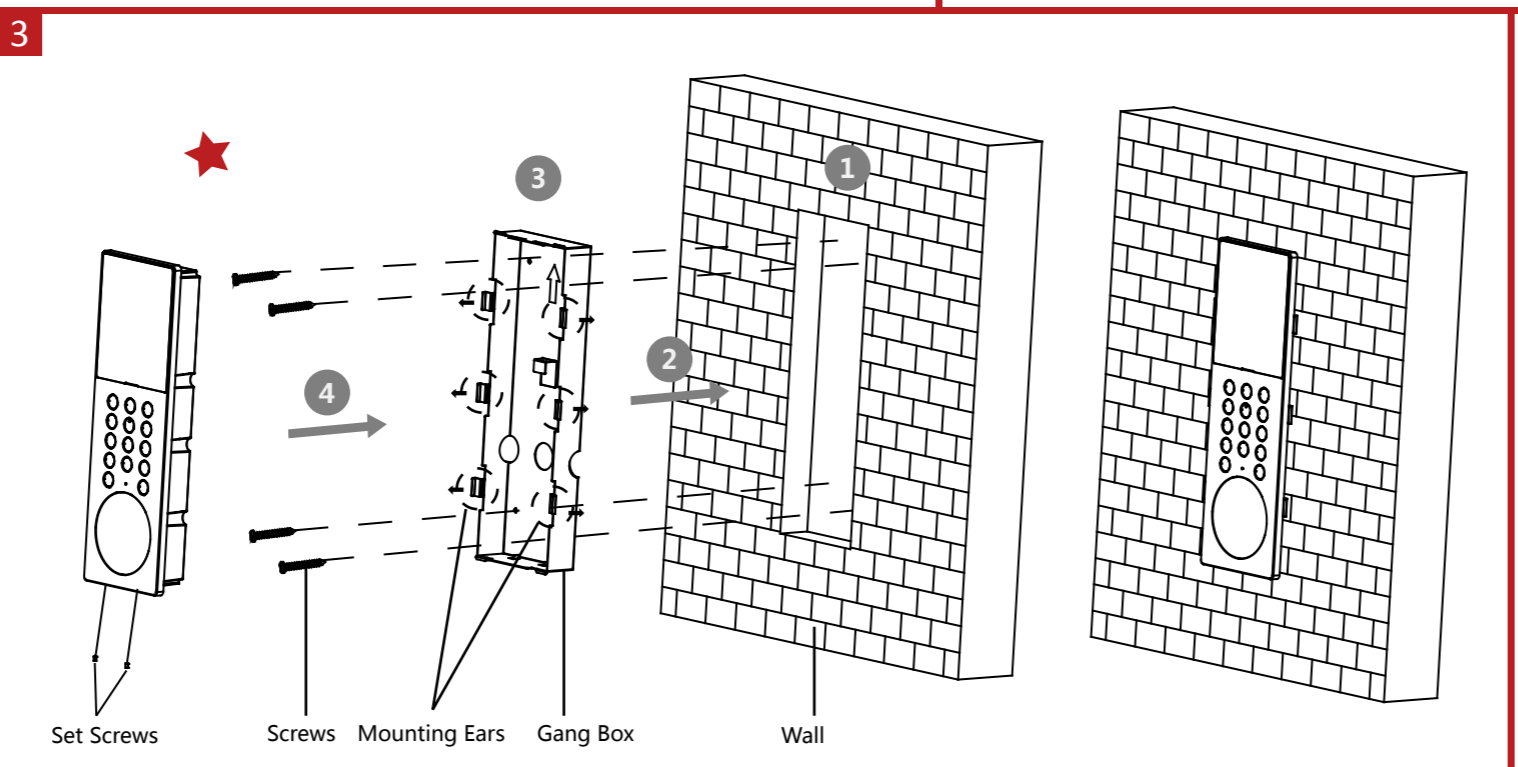
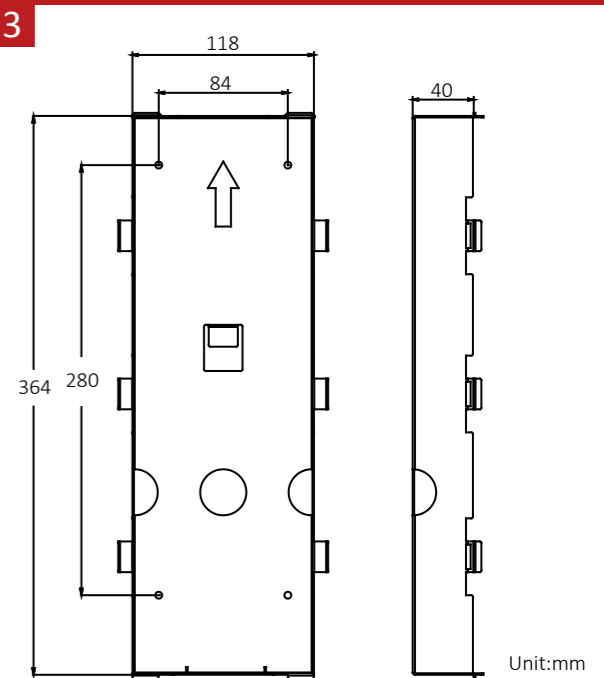
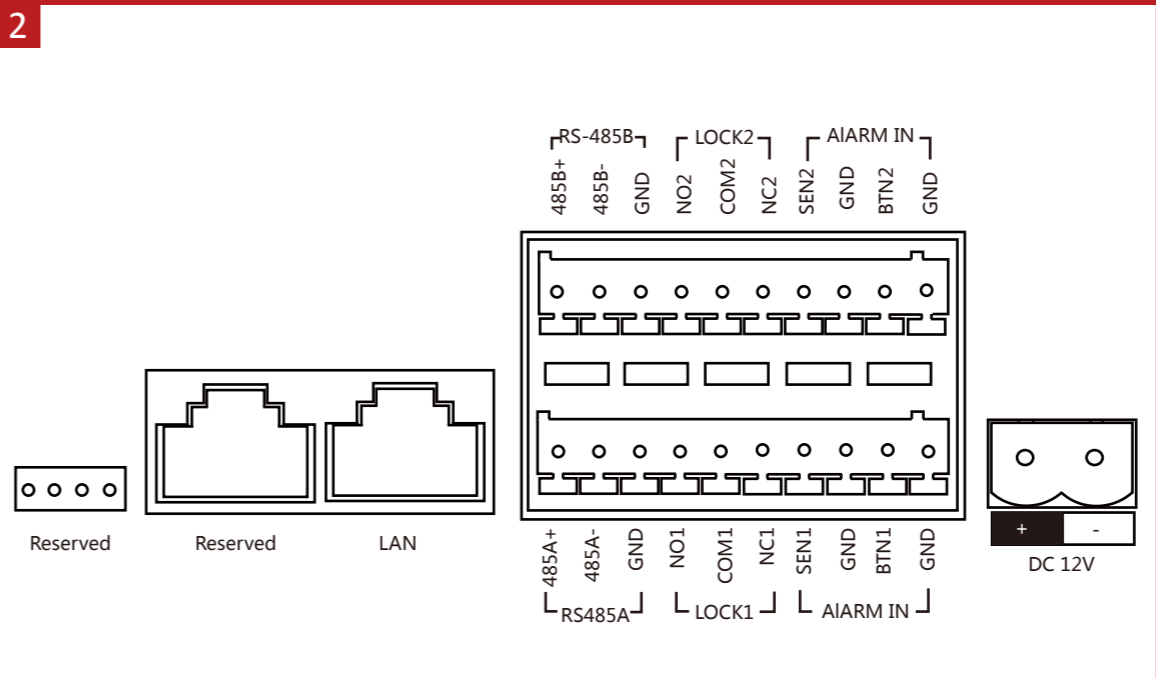
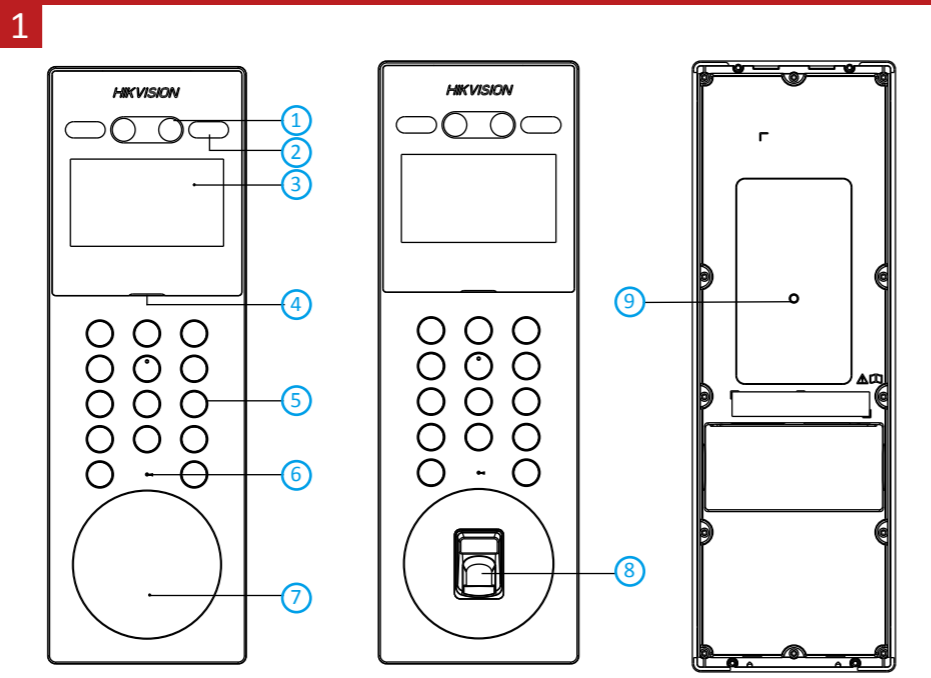
- Keep your expression naturally when collecting or comparing face pictures.
- Do not wear hat, sunglasses, or other accessories that can affect the facial recognition function.
- Do not make your hair cover your eyes, ears, etc. and heavy makeup is not allowed.
- In order to get a good quality and accurate face picture, position your face looking at the camera when collecting or comparing face pictures.
- Make sure your face is in the middle of the collecting window.
- The recommended distance when collecting/comparing face pictures is between 400 mm and 500 mm.

2 Tips When Importing Face Picture

- Picture format: JPG.
- Picture size cannot exceed 200 KB.
- A pure background color is required. White is the best.

Note: The door station can be configured via IVMS-4200 Client Software remotely.

★ Refer to Video Intercom Face Recognition Door Station User Manual (scan the QR code) for details.



Safety Instruction

⚠ Warnings

- All the electronic operation should be strictly compliance with the electrical safety regulations, fire prevention regulations and other related regulations in your local region.
- Please use the power adapter, which is provided by normal company. The power consumption cannot be less than the required value.
- Do not connect several devices to one power adapter as adapter overload may cause over-heat or fire hazard.
- Please make sure that the power has been disconnected before you wire, install or dismantle the device.
- When the product is installed on wall or ceiling, the device shall be firmly fixed.
- If smoke, odors or noise rise from the device, turn off the power at once and unplug the power cable, and then please contact the service center.
- If the product does not work properly, please contact your dealer or the nearest service center. Never attempt to disassemble the device yourself. (We shall not assume any responsibility for problems caused by unauthorized repair or maintenance.)
- The device cover for indoor use shall be kept from rain and moisture.
- Exposing the equipment to direct sun light, low ventilation or heat source such as heater or radiator is forbidden (ignorance can cause fire danger).
- Do not aim the device at the sun or extra bright places. A blooming or smear may occur otherwise (which is not a malfunction however), and affecting the endurance of sensor at the same time.
- If smoke, odors or noise rise from the device, turn off the power at once and unplug the power cable, and then please contact the service center.
- Please use the provided glove when open up the device cover, avoid direct contact with the device cover, because the acidic sweat of the fingers may erode the surface coating of the device cover.
- Please use a soft and dry cloth when clean inside and outside surfaces of the device cover, do not use alkaline detergents.
- Please keep all wrappers after unpack them for future use. In case of any failure occurred, you need to return the device to the factory with the original wrapper. Transportation without the original wrapper may result in damage to the device and lead to additional costs.
- Improper use or replacement of the battery may result in hazard of explosion. Replace with the same or equivalent type only. Dispose of used batteries according to the instructions provided by the battery manufacturer.
- Improper replacement of the battery with an incorrect type may defeat a safeguard (for example, in case of some lithium battery types).
- Do not dispose of the battery into fire or a hot oven, or mechanically crush or cut the battery, which may result in an explosion.
- Do not leave the battery in an extremely high temperature surrounding environment, which may result in an explosion or leakage of flammable liquid or gas.
- Do not subject the battery to extremely low air pressure, which may result in an explosion or the leakage of flammable liquid or gas.
- CAUTION: Risk of explosion if the battery is replaced by an incorrect type.

⚠ Cautions

- Do not drop the device or subject it to physical shock, and do not expose it to high electromagnetic radiation. Avoid the equipment installation on vibrations surface or places subject to shock (ignorance can cause equipment damage).
- Do not place the device in extremely hot (refer to the specification of the device for the detailed operating temperature), cold, dusty or damp locations, and do not expose it to high electromagnetic radiation.

Product Information

©2020 Hangzhou Hikvision Digital Technology Co., Ltd. It includes instructions on how to use the Product. The software embodied in the Product is governed by the user license agreement covering that Product.

About this Manual
 This Manual is subject to domestic and international copyright protection. Hangzhou Hikvision Digital Technology Co., Ltd. ("Hikvision") reserves all rights to this manual. This manual cannot be reproduced, changed, translated, or distributed, partially or wholly, by any means, without the prior written permission of Hikvision.

Trademarks
HIKVISION and other Hikvision marks are the property of Hikvision and are registered trademarks or the subject of applications for the same by Hikvision and/or its affiliates. Other trademarks mentioned in this manual are the properties of their respective owners. No right of license is given to use such trademarks without express permission.

Legal Disclaimer
 TO THE MAXIMUM EXTENT PERMITTED BY APPLICABLE LAW, THE PRODUCT DESCRIBED, WITH ITS HARDWARE, SOFTWARE AND FIRMWARE, IS PROVIDED "AS IS", WITH ALL FAULTS AND ERRORS, AND HIKVISION MAKES NO WARRANTIES, EXPRESS OR IMPLIED, INCLUDING WITHOUT LIMITATION, MERCHANTABILITY, SATISFACTORY QUALITY, FITNESS FOR A PARTICULAR PURPOSE, AND NON-INFRINGEMENT OF THIRD PARTY. IN NO EVENT WILL HIKVISION, ITS DIRECTORS, OFFICERS, EMPLOYEES, OR AGENTS BE LIABLE TO YOU FOR ANY SPECIAL, CONSEQUENTIAL, INCIDENTAL, OR INDIRECT DAMAGES, INCLUDING, AMONG OTHERS, DAMAGES FOR LOSS OF BUSINESS PROFITS, BUSINESS INTERRUPTION, OR LOSS OF DATA OR DOCUMENTATION, IN CONNECTION WITH THE USE OF THIS PRODUCT, EVEN IF HIKVISION HAS BEEN ADVISED OF THE POSSIBILITY OF SUCH DAMAGES.

REGARDING TO THE PRODUCT WITH INTERNET ACCESS, THE USE OF PRODUCT SHALL BE WHOLLY AT YOUR OWN RISKS. HIKVISION SHALL NOT TAKE ANY RESPONSIBILITIES FOR ABNORMAL OPERATION, PRIVACY LEAKAGE OR OTHER DAMAGES RESULTING FROM CYBER ATTACK, HACKER ATTACK, VIRUS INSPECTION, OR OTHER INTERNET SECURITY RISKS; HOWEVER, HIKVISION WILL PROVIDE TIMELY TECHNICAL SUPPORT IF REQUIRED.

SURVEILLANCE LAWS VARY BY JURISDICTION. PLEASE CHECK ALL RELEVANT LAWS IN YOUR JURISDICTION BEFORE USING THIS PRODUCT IN ORDER TO ENSURE THAT YOUR USE CONFORMS THE APPLICABLE LAW. HIKVISION SHALL NOT BE LIABLE IN THE EVENT THAT THIS PRODUCT IS USED WITH ILLEGITIMATE PURPOSES.

Data Protection

During the use of device, personal data will be collected, stored and processed. To protect data, the development of Hikvision devices incorporates privacy by design principles. For example, for device with facial recognition features, biometrics data is stored in your device with encryption method; for fingerprint device, only fingerprint template will be saved, which is impossible to reconstruct a fingerprint image. As data controller, you are advised to collect, store, process and transfer data in accordance with the applicable data protection laws and regulations, including without limitation, conducting security controls to safeguard personal data, such as, implementing reasonable administrative and physical security controls, conduct periodic reviews and assessments of the effectiveness of your security controls.

Regulatory Information

FCC Information
 Please take attention that changes or modification not expressly approved by the party responsible for compliance could void the user's authority to operate the equipment.
 FCC compliance: This equipment has been tested and found to comply with the limits for a Class B digital device, pursuant to part 15 of the FCC Rules. These limits are designed to provide reasonable protection against harmful interference in a residential installation. This equipment generates, uses and can radiate radio frequency energy and, if not installed and used in accordance with the instructions, may cause harmful interference to radio communications. However, there is no guarantee that interference will not occur in a particular installation. If this equipment does cause harmful interference to radio or television reception, which can be determined by turning the equipment off and on, the user is encouraged to try to correct the interference by one or more of the following measures:
 —Reorient or relocate the receiving antenna.
 —Increase the separation between the equipment and receiver.
 —Connect the equipment into an outlet on a circuit different from that to which the receiver is connected.
 —Consult the dealer or an experienced radio/TV technician for help.

FCC Conditions
 This device complies with part 15 of the FCC Rules. Operation is subject to the following two conditions:
 1. This device may not cause harmful interference.
 2. This device must accept any interference received, including interference that may cause undesired operation.

This equipment complies with FCC/IC RSS-102 radiation exposure limits set forth for an uncontrolled environment. This equipment should be installed and operated with minimum distance 20cm between the radiator & your body.
 ce matériel est conforme aux limites de dose d'exposition aux rayonnements, FCC / CNR-102 énoncée dans un autre environnement.cette équipement devrait être installé et exploité avec distance minimale de 20 entre le radiateur et votre corps.

This product and - if applicable - the supplied accessories too are marked with "CE" and comply therefore with the applicable harmonized European standards listed under the RE Directive 2014/53/EU, the EMC Directive 2014/30/EU, the LVD Directive 2014/35/EU, the RoHS Directive 2011/65/EU

2012/19/EU (WEEE directive): Products marked with this symbol cannot be disposed of as unsorted municipal waste in the European Union. For proper recycling, return this product to your local supplier upon the purchase of equivalent new equipment, or dispose of it at designated collection points. For more information see: www.recyclethis.info

2006/66/EC (battery directive): This product contains a battery that cannot be disposed of as unsorted municipal waste in the European Union. See the product documentation for specific battery information. The battery is marked with this symbol, which may include lettering to indicate cadmium (Cd), lead (Pb), or mercury (Hg). For proper recycling, return the battery to your supplier or to a designated collection point. For more information see: www.recycle-this.info

This device complies with Industry Canada licence-exempt RSS standard(s). Operation is subject to the following two conditions:
 (1) this device may not cause interference, and
 (2) this device must accept any interference, including interference that may cause undesired operation of the device.
 Le présent appareil est conforme aux CNR d'Industrie Canada applicables aux appareils radioexemptés de licence. L'exploitation est autorisée aux deux conditions suivantes :
 (1) l'appareil ne doit pas produire de brouillage, et
 (2) l'utilisateur de l'appareil doit accepter tout brouillage radioélectrique subi, même si le brouillage est susceptible d'en compromettre le fonctionnement.

